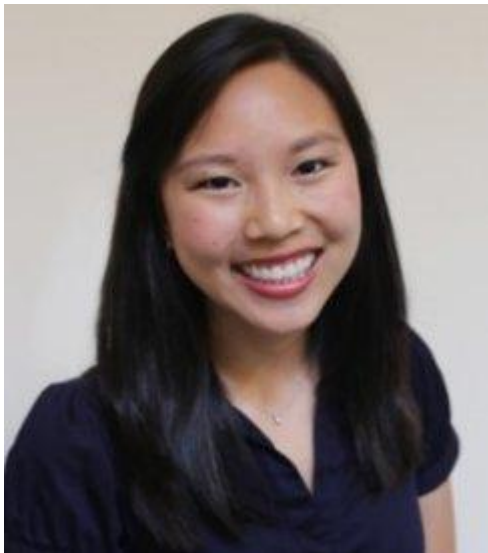


Melody Xu, MD



Educational Background

Radiation Oncology Residency, University of California, San Francisco, (2016-2020)

Preliminary Medicine Internship, Kaiser Permanente San Francisco Medical Center (2016)

MD-MS Perelman School of Medicine at the University of Pennsylvania (2015)

BA University of California, Berkeley (2009)

Awards & Honors

Certificate in Public Health Medicine (2015)

John R. Stanley Research Prize for Dermatology (2014)

Summa Cum Laude (2009)

Selected Publications and Abstracts

Grover S*, Xu MJ*, Jhingran A, Mahantshetty U, Chuang L, Small Jr. W, Gaffney D.
Clinical trials in low and middle-income countries - successes and challenges.
Gynecologic Oncology Reports. Gynecol Oncol Rep. 2017 Feb; 19:5-9. *Co-1st authors

Rodin D, Longo J, Sherertz T, Shah MM, Balagun O, Wendling N, Van Dyk J, Coleman CN, Xu MJ, Grover S. **Mobilising Expertise and Resources to Close the Radiotherapy Gap in Cancer Care.** Clinical Oncology. 2017 Feb; 29(2): 135-140.

Xu MJ, Kirk M, Zhai H, Lin LL. **Bag and loop small bowel contouring strategies differentially estimate small bowel dose for post-hysterectomy women receiving pencil beam scanning proton therapy.** Acta Oncologica 2016 Feb 29:1-9. [Epub ahead of print]

Xu MJ, Dorsey JF, Amaravadi R, et al. **Circulating tumor cells, DNA, and mRNA: potential for clinical utility in patients with melanoma.** Oncologist. 2016 Jan;21(1):84-94. DOI: 10.1634/theoncologist.2015-0207. Epub 2015 Nov 27

Rodin D*, Grover S*, Xu MJ?, et al. **Radiotherapeutic management of non-small cell lung cancer in the minimal resource setting.** J Thorac Oncol. 2016 Jan; 11(1)21-9. DOI: 10.1016/j.jtho.2015.09.008 *co-1st authors, ?2nd author

Xu MJ, Chu C, Rubin S, Lin LL. **Survival outcomes improved in contemporary cohort of patients with pelvic or abdominal recurrence after treatment for Stage I/II endometrial carcinoma.** Am J Clin Oncol. 2015 Jul 31. [Epub ahead of print]

Xu MJ, Cooke M, Karakousis G, et al. **A Novel Approach for the Detection and Genetic Analysis of Live Melanoma Circulating Tumor Cells.** PLoS ONE. 2015;10(3):e0123376.

Grover S, Xu MJ, Yeager A, et al. **A systematic review of radiotherapy capacity in low and middle income countries.** Front Oncol Epub 2015 Jan 22; 4:380. DOI: 10.3389/fonc.2014.00380

Dorsey JF*, Kao GD*, MacArthur KM*, Ju M?, et al. **Tracking Viable Circulating Tumor Cells (CTC) in the Peripheral Blood of Non-Small Cell Lung Cancer Patients Undergoing Definitive Radiation Therapy: Pilot Study Results.** Cancer. 2015 Jan 1; 121(1): 139-49. *co-1st authors, ?2nd author

Ju M, Berman AT, Vapiwala N. **The Evolution of Proton Beam Therapy: Insights from Early Trials and Tribulations.** Int J Radiat Oncol Biol Phys. 2014 Nov 15; 90(4): 722-735.

Ju M, Berman AT, Vapiwala N. **Standardized Patient Training Programs: An Efficient Solution to the Call for Quality Improvement in Oncologist Communication Skills.** J Cancer Educ. Epub 2014 Sep 5. DOI: 10.1007/s13187-014-0715-x 9 [Epub ahead of print].

Ju M, Berman AT, Hwang WT, LaMarra D, Baffic C, Suneja G, Vapiwala N. **Assessing Interpersonal and Communication Skills in Radiation Oncology Residents: a Pilot Standardized Patient Program.** Int J Radiat Oncol Biol Phys. 2014 Apr 1;88(5):1129-35.

Ju M, Kao GD, Steinmetz D, Chandrasekaran S, Keefe SM, Guzzo TJ, Christodouleas J, Hahn SM, Dorsey JF. **Application of a Telomerase-based Circulating Tumor Cell (CTC) Assay in Bladder Cancer Patients Receiving Post-operative Radiation Therapy: A Case Study.** *Canc Biol Ther.* 2014 Mar 11;15(6).

Presentations:

Invited speaker. ?Cardiac Complications in Radiation Oncology.? Kaiser San Francisco Internal Medicine Residency Program. March 2017.

Invited speaker. ?An Educational Needs Assessment: Palliative Oncologic Care in Underserved and Resource-Limited Populations.? UCSF Education Symposium. March 2017

Invited speaker. ?Basic Concepts in Targeted Cancer Therapies.? Kaiser San Francisco Internal Medicine Residency Program. June 2016.

Invited speaker. ?Radiation Oncology for Internists.? Kaiser San Francisco Internal Medicine Residency Program. March 2016.

Invited speaker. ?Update on Melanoma Circulating Tumor Cell (CTC) Project.? University of Pennsylvania Melanoma Tumor Board. November 2014.

Invited Speaker. ?Capturing the Elusive Foe?: a Novel Telomerase Promoter-Based Approach to Detect Melanoma Circulating Tumor Cells (CTCs). University of Pennsylvania Radiation Oncology Research Division. May 2014.

*/

UCSF Main Site

© 2015 The Regents of the University of California

Source URL: <http://radonc.ucsf.edu/melody-xu-md>