

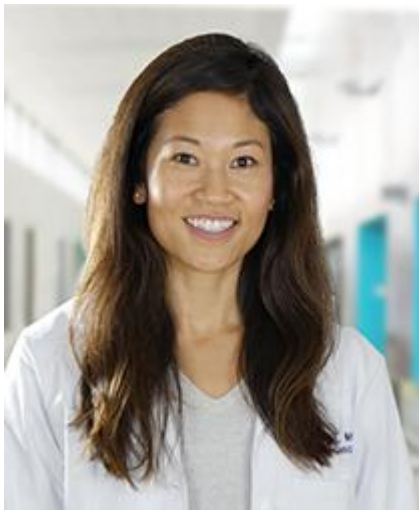
Published on *UCSF Department of Radiation Oncology* (<http://radonc.ucsf.edu>)

[Home](#) > [Our Team](#) > [Medical Faculty](#) > [Emi Yoshida](#)

---

## Emi Yoshida

---



### Emi J. Yoshida, M.D.

**Assistant Professor**  
**Department of Radiation Oncology**

University of California, San Francisco  
Helen Diller Family Comprehensive Cancer Center  
Box 1708, 1600 Divisadero St, H1031  
San Francisco, CA 94115

[Make A Gift](#)  
[Support Our Research](#)

[1]

### Professional Focus

Dr. Emi Yoshida is a radiation oncology with a clinical interest in the treatment of gynecologic, breast, and CNS malignancies. Her research focuses on radiation-related toxicity and methods of improving the therapeutic ratio. She strives to integrate patient reported quality-of-life outcomes into routine clinical practice and into clinical research endpoints.

Dr. Yoshida earned her medical degree from the University of California Davis and completed an internal medicine internship at Kaiser Oakland. She then completed residency at Cedars-Sinai Medical Center where she served as chief resident. During her residency, she developed a phase I radiation dose-escalation trial investigating the optimal dose for

preoperative stereotactic radiosurgery for the treatment of brain metastases. The irradiated and resected tumors are being used to characterize the response of metastatic brain lesions to radiation and identify associated immune-based biomarkers.

## Education

2004	University of California, Los Angeles	BA	Business-Economics, Sociology
2008	Columbia University	Postbacclaureate	Medical Sciences
2013	University of California, Davis	MD	Medicine
2013-2014	Kaiser Permanente, Oakland	Internship	Internal Medicine
2014-2018	Cedars-Sinai Medical Center	Residency	Radiation Oncology
2017-2018	Cedars-Sinai Medical Center	Chief Resident	Radiation Oncology

## Professional Experience

2018-Present	University of California, San Francisco	Assistant Professor	Radiation Oncology
--------------	---	---------------------	--------------------

## Awards & Honors

2010	Medical Scholars Award, Emory University
2010	Medical Student Research Fellowship, UC Davis
2011	Research Travel Award, UC Davis
2013	Outstanding Student in Radiation Oncology, UC Davis
2014	Travel Award and Ambassadorship, Hiroshima International Council for Health Care/International Atomic Energy Agency Conference
2017	Toscano Fund Grant, Cedars-Sinai Medical Center Department of Radiation Oncology
2018	Leo G. Rigler, MD Award for Outstanding Academic Achievement, Cedars-Sinai Medical Center

## Recent Significant Publications :

Yoshida EJ, Luu M, David JM, Kim S, Mita A, Scher K, Shiao SL, Tighiouart M, Ho AS, Zumsteg ZS. **Postoperative chemoradiation in patients with head and neck cancer aged 70 or older with positive margins or extranodal extension, and the influence of nodal classification.**

Head Neck 2018;40(6):1228-1236. PMID: 29417700.

Yoshida EJ, Luu M, David JM, Kim S, Mita A, Scher K, Shiao SL, Tighiouart M, Lee NY, Ho AS, Zumsteg ZS. **Facility volume and survival in nasopharyngeal carcinoma.** Int J Radiat Oncol Biol Phys 2018;100(2):408-417. PMID: 29100787.

Zumsteg ZS, Luu M, Yoshida EJ, Kim S, Tighiouart M, David JM, Shiao SL, Mita A, Scher K, Sherman E, Lee NY, Ho AS. **Combined high-intensity local treatment and systemic therapy in metastatic head and neck squamous cell carcinoma: an analysis of the National Cancer Data Base.** Cancer 2017;123(23):4583-4593. PMID: 28817183.

David JM, Ho AS, Luu M, Yoshida EJ, Kim S, Mita A, Scher K, Shiao SL, Tighiouart M, Zumsteg ZS. **Treatment at high volume facilities and academic centers are independently associated with improved survival in locally advanced head and neck cancer.** Cancer 2017;123(20):3933-3942. PMID: 28640546.

Ma Z, Shiao SL, Yoshida EJ, Swartwood S, Huang F, Doche M, Chung A, Knudsen B, Gertych A. **Data integration from pathology slides for quantitative imaging of multiple cell types within the tumor immune cell infiltrate.** Diagn Pathol 2017;12(1):69. PMID: 28923066.

Zumsteg ZS, Cook-Wiens G, Yoshida E, Shiao SL, Lee NY, Mita A, Jeon C, Goodman MT, Ho AS. **Incidence of oropharyngeal cancer among elderly patients in the United States.** JAMA Oncol 2016;2(12):1617-1623. PMID: 27415639.

Yoshida EJ, Garcia J, Eisele DW, Chen AM. **Salivary gland malignancies in children.** Int J of Pediatr Otorhinolaryngol 2014;78(2):174-178. PMID: 24332197.

Yoshida E, Ahoud R, Fragoso R, Farwell G, Gandour-Edwards R, Donald PJ, Chen AM. **Improved clinical outcomes with multi-modality therapy for sinonasal undifferentiated carcinoma of the head and neck.** Am J Otolaryngol 2013;36(6):658-663. PMID: 23993024.

Yoshida EJ, Chen H, Torres MA, Andic F, Liu H, Chen Z, Sun X, Curran WJ, Liu T. **Reliability of quantitative ultrasonic assessment of normal-tissue toxicity in breast cancer radiotherapy.** Int J Radiat Oncol Biol Phys. Int J Radiat Oncol Biol Phys 2012;82(2):724-731. PMID: 21435799.

Yoshida EJ, Chen H, Torres MA, Curran WJ, Liu T. **Spectrophotometer and ultrasound evaluation of late toxicity following breast-cancer radiotherapy.** Med Phys 2011;38(10):5747-5755. PMID: 21992389.

\*/

UCSF Main Site

© 2015 The Regents of the University of California

---

**Source URL:** <http://radonc.ucsf.edu/emi-yoshida>

**Links**

[1] <http://radonc.ucsf.edu/make-gift>