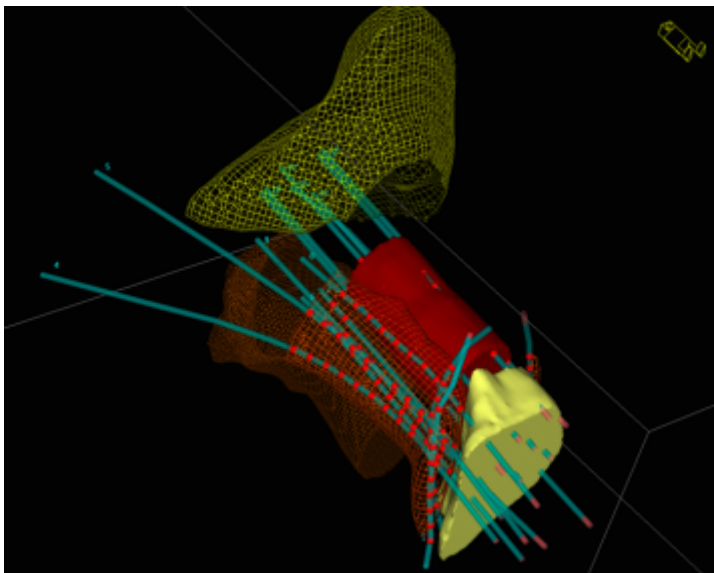


Gynecologic Cancers

Cancer that starts in a woman's reproductive organs is called gynecologic cancer. There are several places within a woman's pelvis where gynecologic cancer can start.

- Cancer that starts in the cervix is called *cervical cancer*. The *cervix* is the lower end of the uterus.
- Cancer that starts in the ovaries is called *ovarian cancer*. Women normally have two ovaries, one on each side of the uterus.
- Cancer that starts in the uterus is called *uterine cancer*. The uterus is also called the womb. Endometrial cancer is the most common type of uterine cancer; it forms in the lining of the uterus, called the endometrium.
- Cancer that starts in the vagina is called *vaginal cancer*. The vagina is the hollow channel between the uterus and the outside of the body.
- Cancer that starts in the vulva is called *vulvar cancer*. The vulva is the outer part of the female genital organs, and includes two folds of skin called the labia. Vulvar cancer is most commonly seen on the inner edges of the labia.



Representation of HDR Brachytherapy [1] planning technique for treating a gynecologic cancer.

UCSF Radiation Oncology is part of the UCSF Comprehensive Cancer Center, a member of the National Comprehensive Cancer Network; an alliance of 26 of the world's leading cancer centers. We offer a complete range of treatments for gynecologic cancers, individually customized for each patient, including:

- Intensity Modulated Radiation Therapy [2]
- Stereotactic Body Radiation Therapy [3]
- Intracavitary Brachytherapy [1]
- Interstitial Brachytherapy [1]
- Image Guided Brachytherapy [1]

Helpful UCSF Internet Site:

UCSF Gynecology Oncology *Condition*.....
http://www.ucsfhealth.org/conditions/gynecologic_cancer/ [4]

*/

UCSF Main Site

© 2015 The Regents of the University of California

Source URL: <http://radonc.ucsf.edu/gynecologic-cancers>

Links

- [1] <http://radonc.ucsf.edu/brachytherapy-hdr-ldr>
- [2] <http://radonc.ucsf.edu/intensity-modulated-radiation-therapy-imrt>
- [3] <http://radonc.ucsf.edu/stereotactic-body-radiation-therapy-sbrt>
- [4] http://www.ucsfhealth.org/conditions/gynecologic_cancer/