

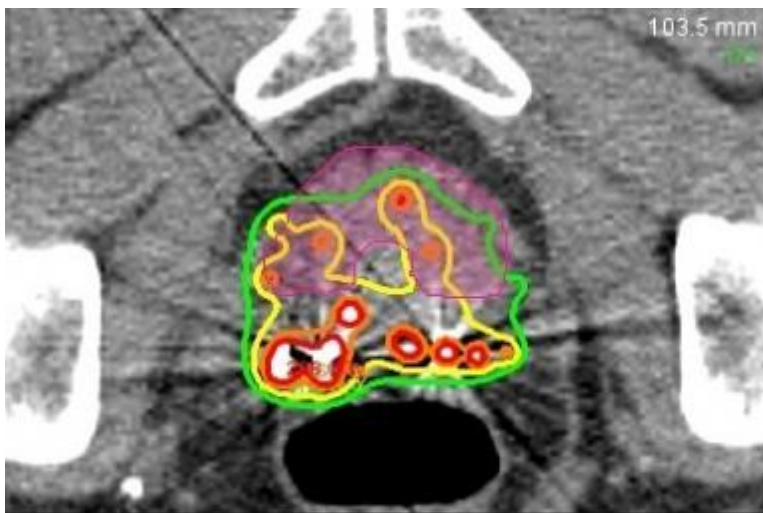
Published on *UCSF Department of Radiation Oncology* (<https://radonc.ucsf.edu>)

Home > Research > Technology and Innovation > Salvage Radiotherapy

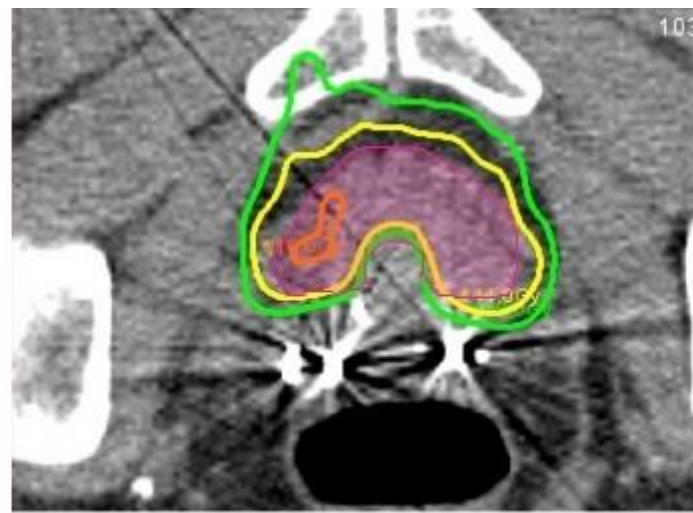
Salvage Radiotherapy

Re-treating patients who have previously received radiotherapy

The UCSF Department of Radiation Oncology serves as a tertiary care center for the greater San Francisco Bay Area region and for Northern California. Every day the department cares for patients who have already received several courses of treatments at other facilities. Our physics and dosimetry teams are experienced in creating summations of all previous and current treatment courses and accounting for the total radiation dose to each organ.



Dose from previous brachytherapy plan. Isodose lines reveal cold region in anterior portion of prostate.



Dose for the retreatment plan. Planning target (shaded) covers the cold region from the previous plan.

Our physicians have expertise in evaluating the risks and benefits of reirradiation to each of the various organs and strategically selecting among competing risks to create the safest

plan. The department utilizes state-of-the-art treatment delivery technology and computer systems to precisely deliver radiation to recurrent cancer. The department has pioneered several techniques for the safe and effective retreatment of patients with radiation and continues to develop innovative methods for treating under these challenging clinical conditions.

*/

UCSF Main Site

© 2015 The Regents of the University of California

Source URL: <https://radonc.ucsf.edu/salvage-radiotherapy>